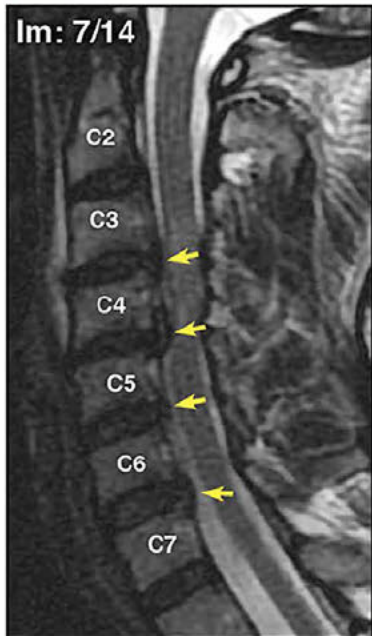
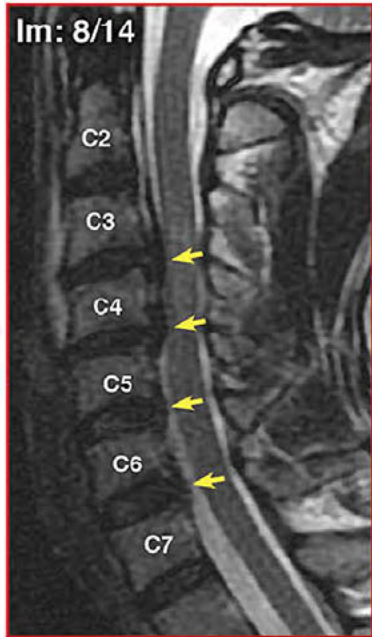
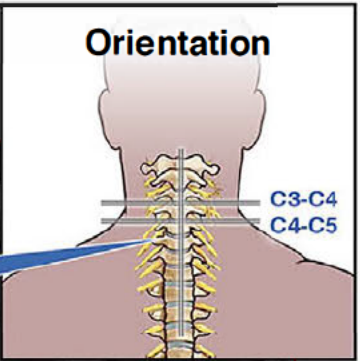
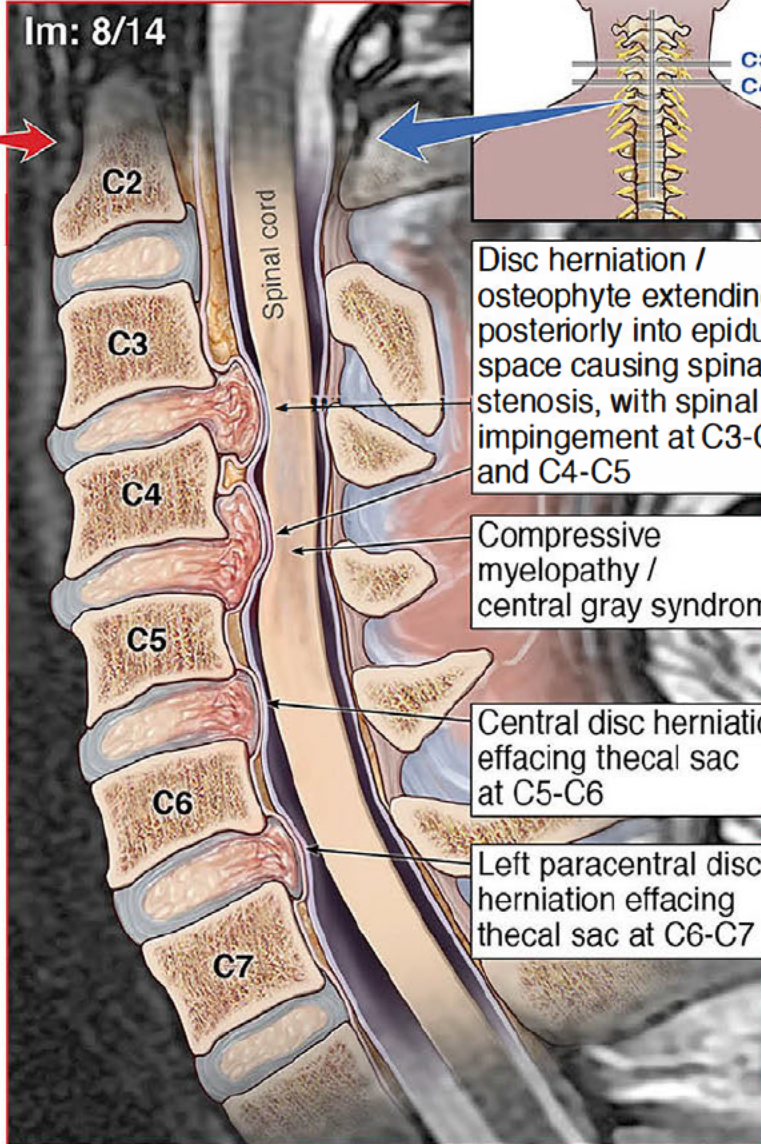


# 4/3/17 Cervical Spine MRI Findings



Sagittal MRI and Illustration



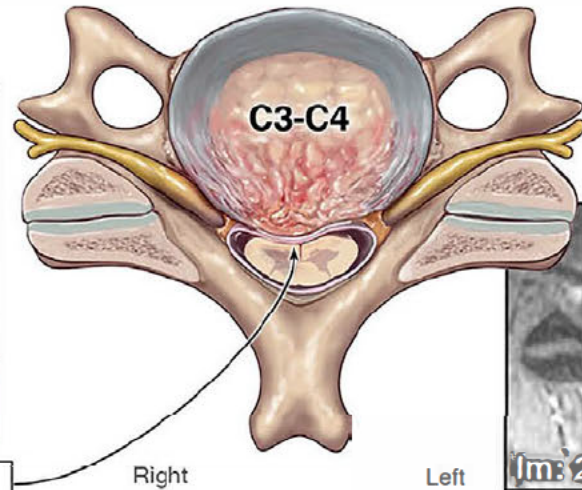
Disc herniation / osteophyte extending posteriorly into epidural space causing spinal stenosis, with spinal cord impingement at C3-C4 and C4-C5

Compressive myelopathy / central gray syndrome

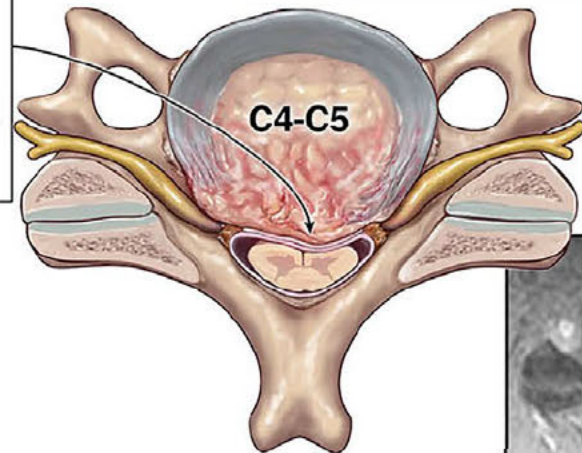
Central disc herniation effacing thecal sac at C5-C6

Left paracentral disc herniation effacing thecal sac at C6-C7

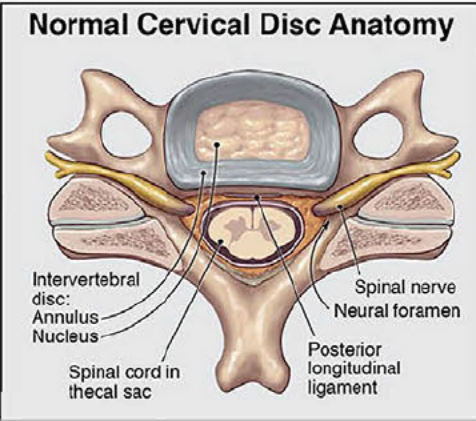
Axial Views (from Below)



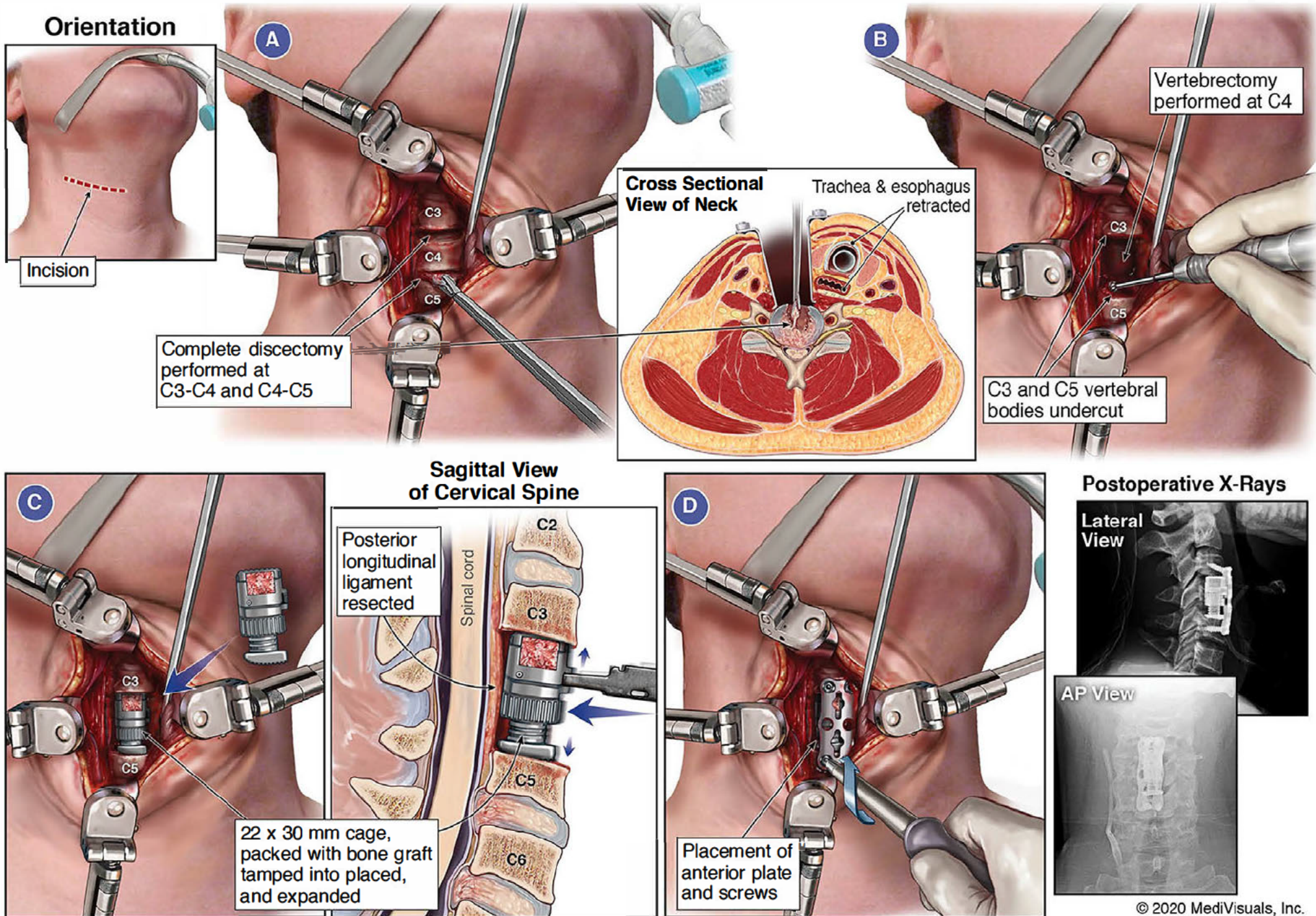
Axial MRI of C3-C4



Axial MRI of C4-C5

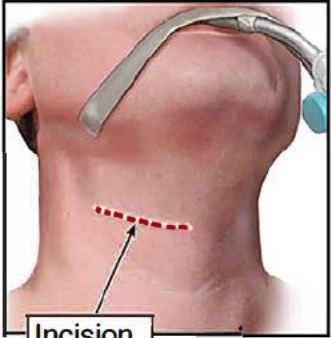


# 4/4/17 Anterior C3-C5 Decompression & Fusion Surgery

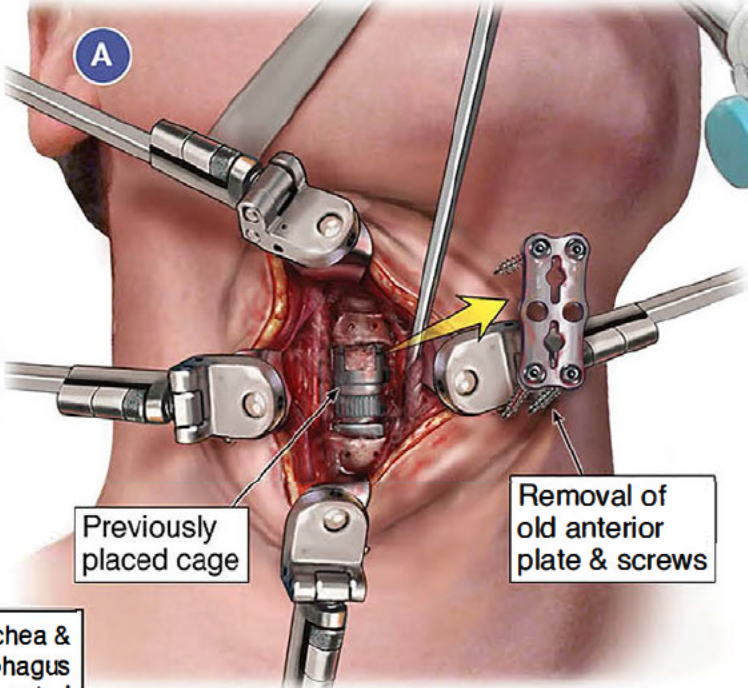


# Future Cervical Hardware Removal & Fusion Extension

## Orientation

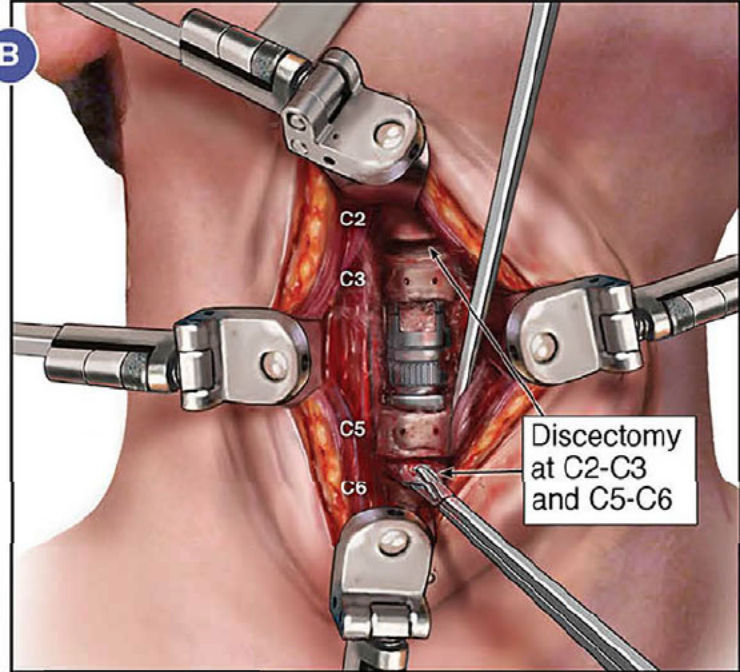


Incision re-open



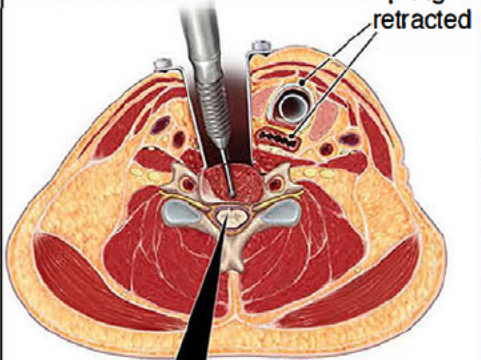
Previously placed cage

Removal of old anterior plate & screws

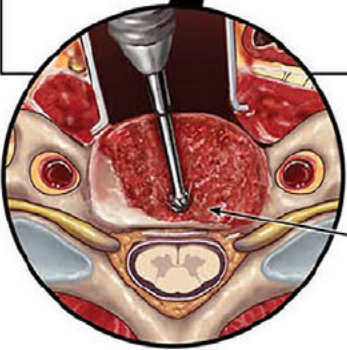


Discectomy at C2-C3 and C5-C6

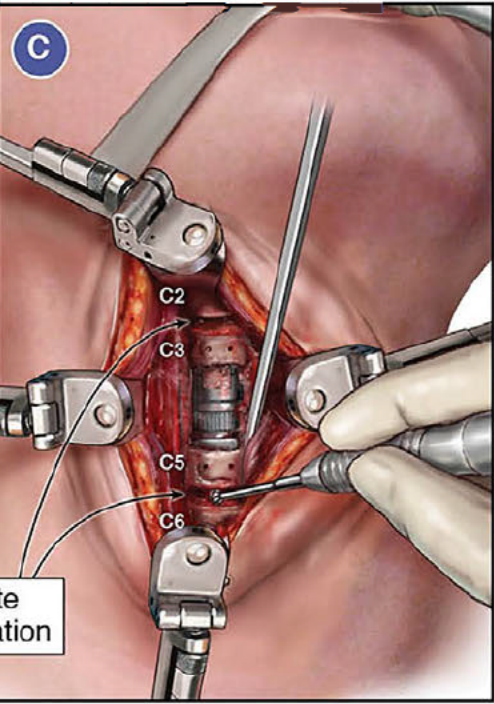
## Cross Sectional View of Neck



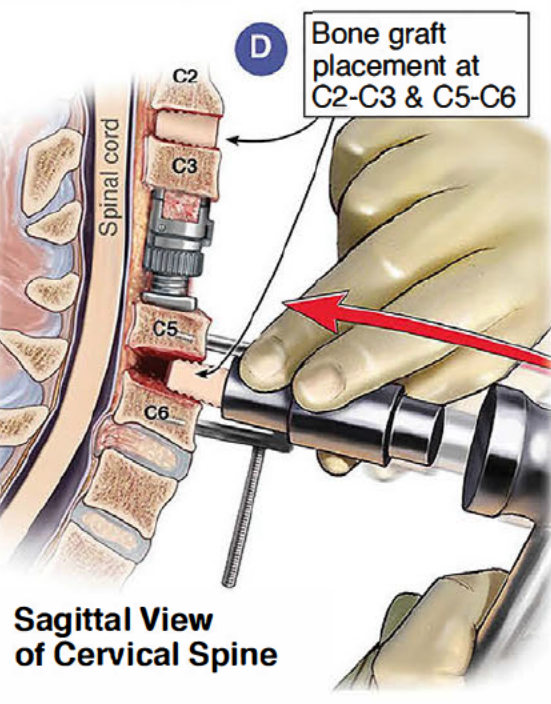
Trachea & esophagus retracted



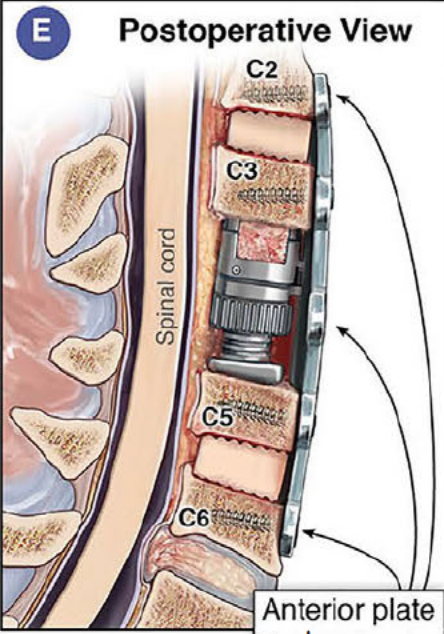
Endplate preparation



Bone graft placement at C2-C3 & C5-C6



Sagittal View of Cervical Spine



Anterior plate and screws